



THE ACADEMIC JOURNEY AT UNIME INTERNATIONAL MEDICAL SCHOOL



THE UNIME – INTERNATIONAL MEDICAL SCHOOL IN NUMBERS

SINGLE CYCLE MASTER DEGREE IN MEDICINE AND SURGERY

6 YEARS, FULL-TIME

- ❑ 2 PRE-CLINICAL YEARS, devoted to the study of basic sciences providing the fundamental knowledge of disease mechanisms
- ❑ 4 CLINICAL YEARS, devoted to the study of medical disciplines and the development of professional skills

360 EUROPEAN CREDIT TRANSFER SYSTEM (ECTS) CREDITS

- ✓ 265 ECTS → LESSONS
- ✓ 54 ECTS → TRAINING IN PROFESSIONAL ACTIVITIES
- ✓ 8 ECTS → ELECTIVE ACTIVITIES
- ✓ 4 ECTS → FURTHER LINGUISTIC KNOWLEDGE
- ✓ 15 ECTS → PRACTICAL EVALUATION TRAINEESHIP (TPVES,
QUALIFYING FOR MEDICAL PROFESSION)
- ✓ 14 ECTS → THESIS PREPARATION



According to the Professional Qualifications Directive 2005/36/EC basic medical education should be based on at least 5,500 training hours.

1 ECTS = 25 HOURS

- LESSONS (F.T.) → 1 ECTS = 12 hours frontal teaching + 13 hours individual learning
- TRAINING ACTIVITIES (T.A.) → 1 ECTS = 25 hours
- ELECTIVE ACTIVITIES → 1 ECTS = 25 hours
- TPVES → 1 ECTS = 25 hours
- THESIS → 1 ECTS = 25 hours



Single-Cycle Degree

**MEDICINE
AND SURGERY**

Unime.it  

Login

BIOMORF

[The course](#)

[Enrolling](#)

[Studying](#)

[Graduating](#)

[Contacts](#)

[Services](#)



[Home](#) / [The course](#) / [Study Plan](#)

Study Plan



 Study plan a.y. 2023.24

PIANO STATUTARIO

Year of study: 1

Required

BODY ARCHITECTURE

5 CFU - 62.5 hours

2 Semester

EARLY CLINICAL CONTACT AND COMMUNICATION SKILLS 1

1 CFU - 12.5 hours

2 Semester

CFU=ECTS

Browse the section

| Study Plan

Organization

Career prospects

Course of study

Professional profiles

Teaching methods


Degree programme

The teaching activity is structured in
35 Integrated Courses including different **Subjects**,
organized in **Lessons** and **Training activities (T.A.)**

- 1st year: 50 ECTS **(1 T.A.)** – 8 exams
 - 2nd year: 55 ECTS **(2 T.A.)** – 7 exams
 - 3rd year: 58 ECTS **(12 T.A.)** – 6 exams
 - 4th year: 64 ECTS **(13 T.A.)** – 6 exams
 - 5th year: 55 ECTS **(14 T.A.)** – 7 exams
 - 6th year: 37 ECTS **(12 T.A.)** – 2 exams
- } + **PRACTICAL
EVALUATION
TRAINEESHIP
(15 ECTS)**

The goal is getting at least 40 ECTS
within the end of each calendar year.





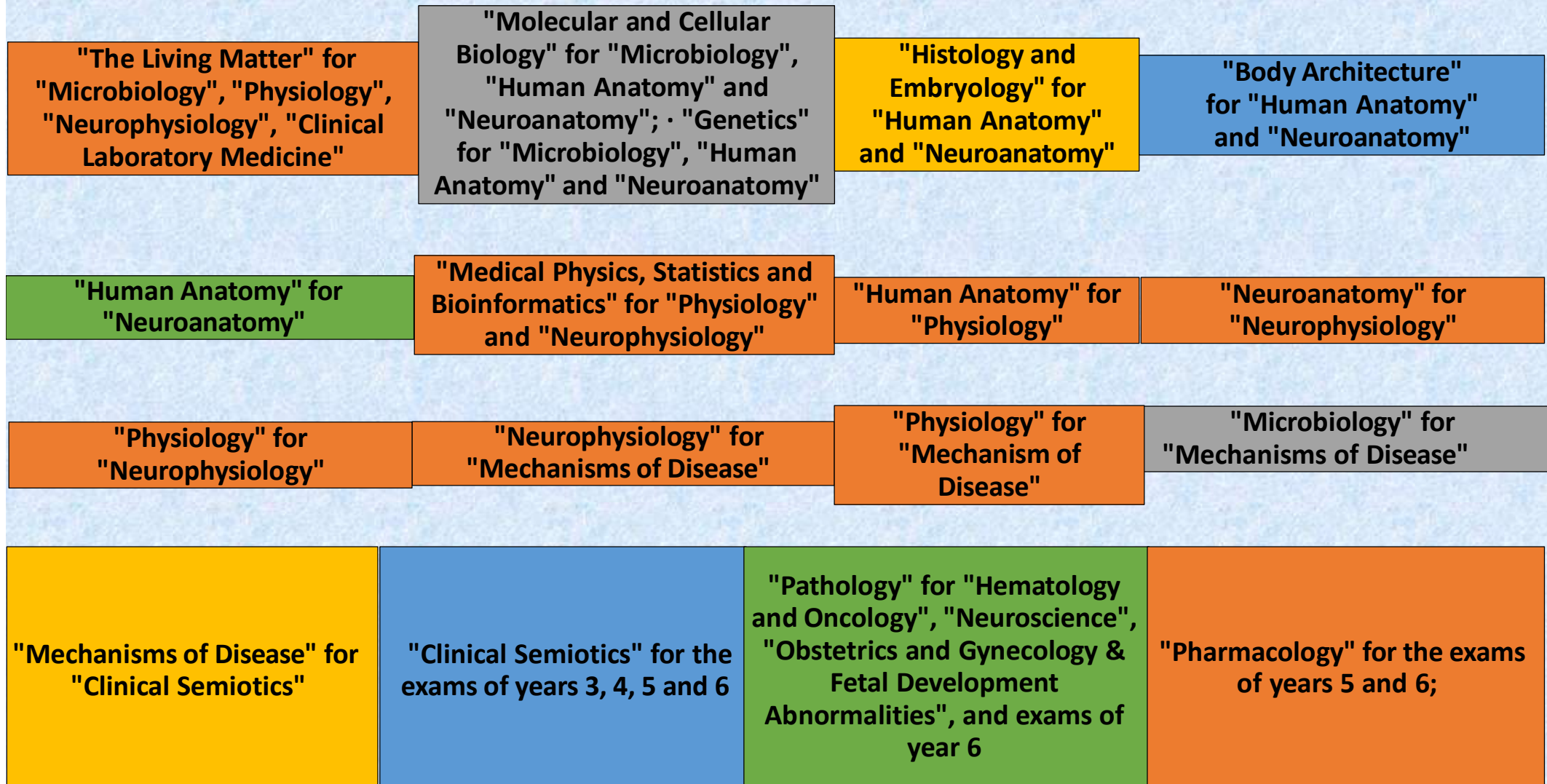
The sequence of the integrated
courses and exams follows a
propaedeutic order, where
propaedeutic courses provides the
foundation for subsequent
subjects

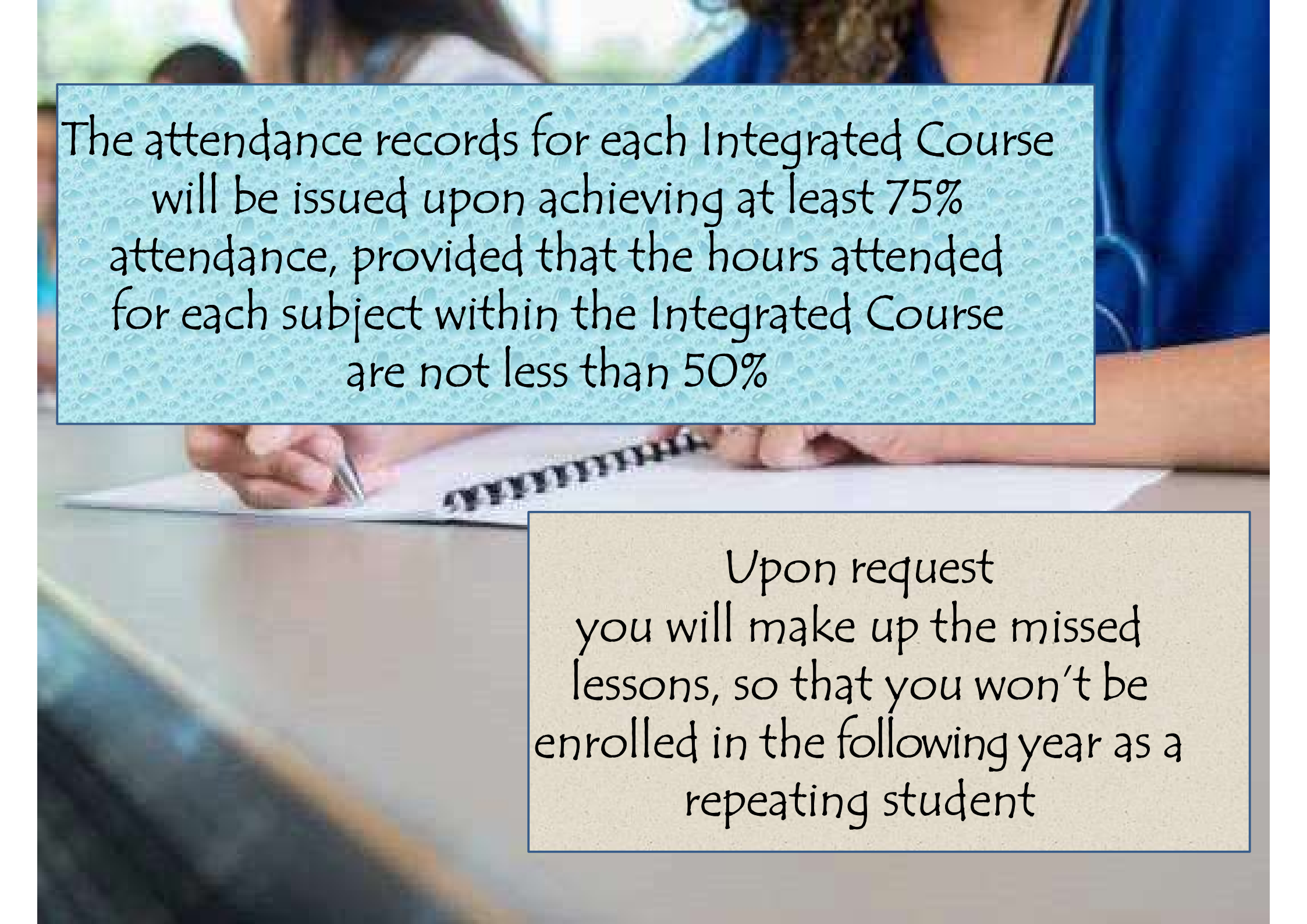
Degree Teaching Regulations
Courses
Professors

PROPAEDEUTIC EXAMS ARE:

IMS Degree Teaching Regulations Art. 8 – Propaedeutic courses

The exams of the first
4 years for the
Practical Evaluation
Traineeship



The background of the slide shows a blurred classroom scene. In the foreground, a student's hand is visible, holding a pen and writing on a spiral-bound notebook. Other students are visible in the background, some wearing blue shirts. The overall setting appears to be a school or educational institution.

The attendance records for each Integrated Course will be issued upon achieving at least 75% attendance, provided that the hours attended for each subject within the Integrated Course are not less than 50%

Upon request you will make up the missed lessons, so that you won't be enrolled in the following year as a repeating student

Studying at UniME-IMS

Browse the section

Courses

Professors

Courses Timetable

Exam sessions

Graduation sessions

International Network

Classrooms and laboratories

Internships

Degree Teaching Regulations and Catalogue

Practical Evaluation Traineeship

Degree Course Council Meetings

Previous teaching activity

Tutor buddy



TUTOR PROGRAM

AN INITIATIVE BY IMS UNIME



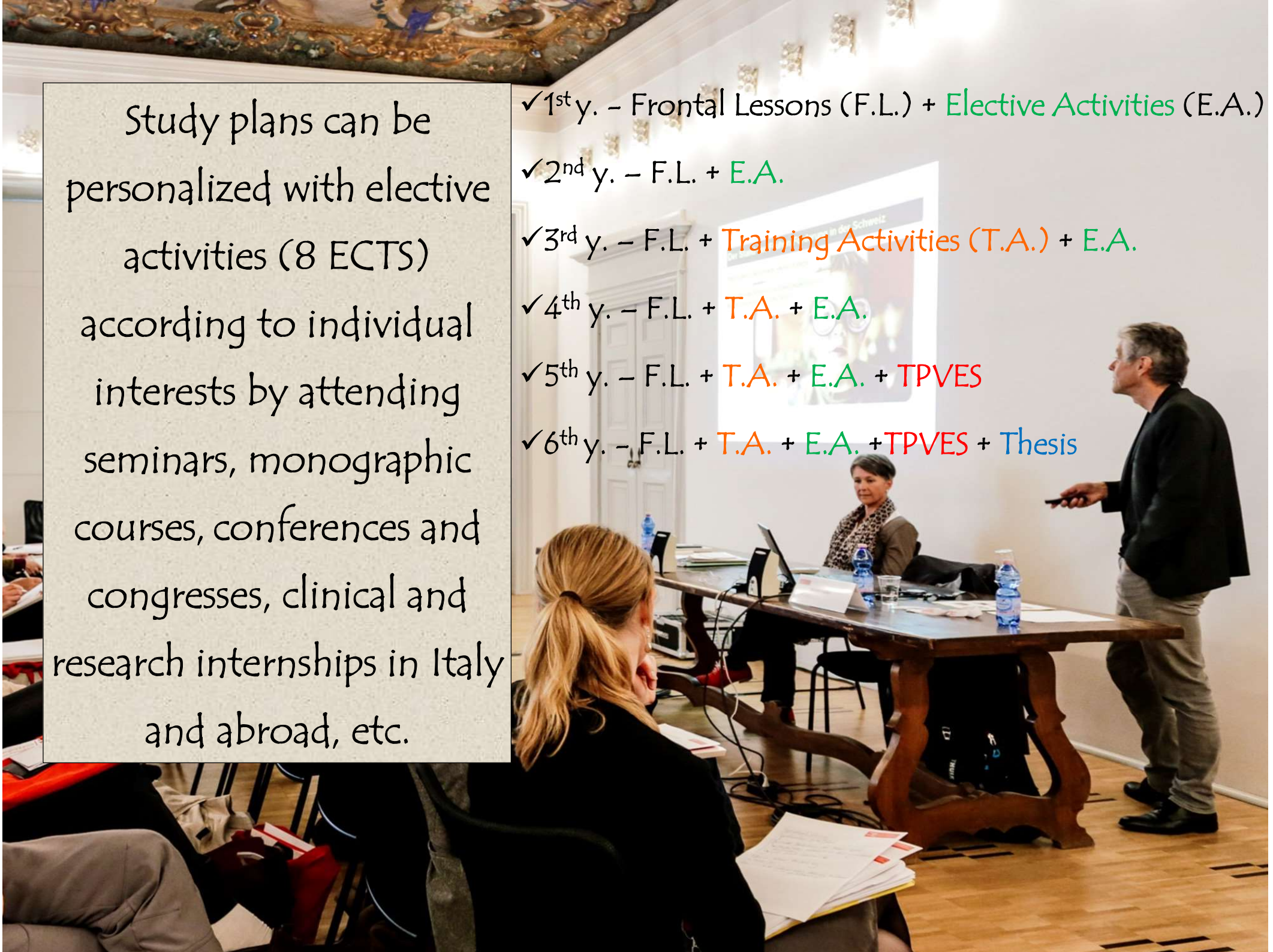
Students tutor



<https://medicine-and-surgery.cdl.unime.it/en/studying-0>

Study plans can be personalized with elective activities (8 ECTS) according to individual interests by attending seminars, monographic courses, conferences and congresses, clinical and research internships in Italy and abroad, etc.

- ✓ 1st y. – Frontal Lessons (F.L.) + Elective Activities (E.A.)
- ✓ 2nd y. – F.L. + E.A.
- ✓ 3rd y. – F.L. + Training Activities (T.A.) + E.A.
- ✓ 4th y. – F.L. + T.A. + E.A.
- ✓ 5th y. – F.L. + T.A. + E.A. + TPVES
- ✓ 6th y. – F.L. + T.A. + E.A. + TPVES + Thesis



YEARLY ELECTIVE ACTIVITIES

MADE AVAILABLE BY UNIME-IMS

Subject	CFU/ Credits	Ore/ hours	Period	Number of students accepted/year	Number of students accepted/activity session	Start of activity	Contacts
Biochemistry Laboratory activities	1	25	Y (2 nd -3 rd)	6	3	February 3 rd , 2025	aguenoz@unime.it
From Genes to Memory: Investigating the Neurobiology of Alzheimer's Disease	1	25	Y (2 nd -3 rd)	6	2	January 28 th , 2025	salvatore.oddo@unime.it
Computational Biology in Genetic Diseases	1	25	Y (2 nd - 6 th)	9	3	March 10 th , 2025	luigi.donato@unime.it
Connectomics: study of structural and functional brain connectivity	3	75	Y (3 rd -6 th)	6	To be agreed with the teacher	February 3 rd , 2025	alberto.cacciola@unime.it
Recording and analyzing human movements by motion capture systems: a "hands-on" internship	1	25	Y (3 rd -6 th)	6	To be agreed with the teacher	March 10 th , 2025	antonino.casile@unime.it
Bone tissue engineering and regenerative medicine	1	25	Y (3 rd -6 th)	6	To be agreed with the teacher	February 3 rd , 2025	giovanna.calabrese@unime.it
Study of lymphocyte sub-populations and Innate Lymphoid Cells in health and disease	1	25	Y (3 rd -6 th)	2	To be agreed with the teacher	February 3 rd , 2025	irene.bonaccorsi@unime.it
Sports Medicine	1	25	Y (4 th -6 th)		10		giuseppe.santoro@unime.it

Internships in clinical departments or in research laboratories

is authorized by the Course Council upon presentation of a
request (<https://medicine-and-surgery.cdl.unime.it/en/studying/internships>)

Degree programme



- Presentation
- Career prospects
- Learning objectives
- Study Plan
- Admission requirements
- How to enroll
- Exam validation request
- Quality assurance
- University Hospital "G. Martino"
- Internships
- Order of Physicians, Surgeons and Dentists of the Province of Messina
- Frequently Asked Questions (F.A.Q.)

INTERNATIONAL

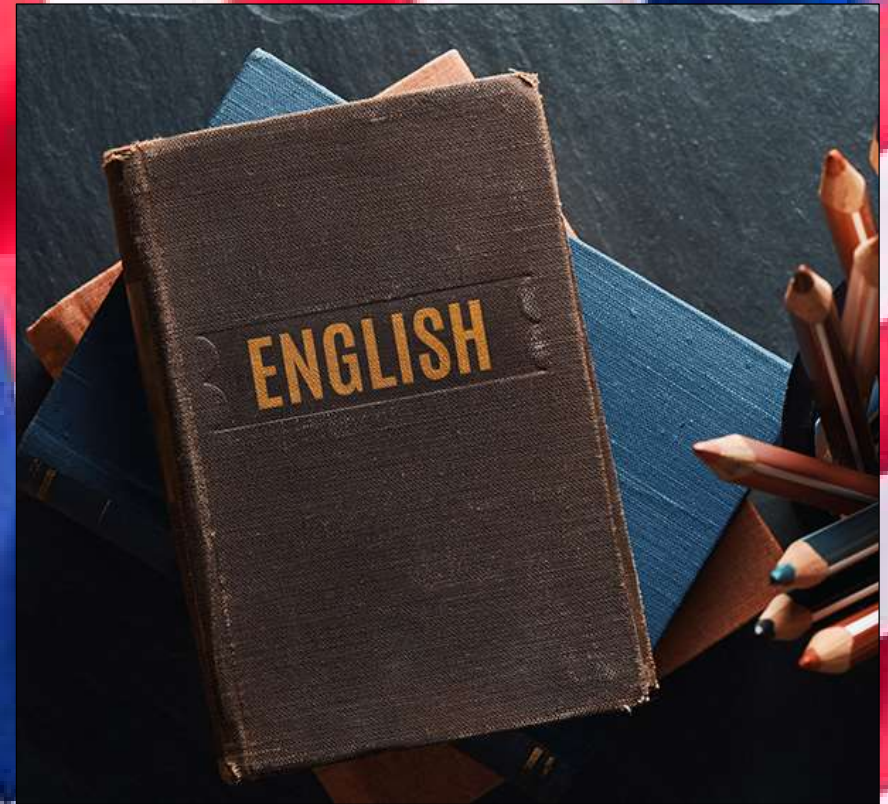


Unime english website
International Relations Unit
International network

Segretariato Italiano Studenti in Medicina
<https://messina.sism.org/>

The official language of the Course for lessons, training activities and exams is English.

Minimum level of knowledge required for access: B2 of the Common European Framework of Reference of languages (CEFR)



Browse the section

Housing

E-learning

Canteens

Transport

Wi-Fi

Student Ambassador Program

Libraries

Sport

Disabled Students

Psychological support

Telegram

Tutor program

B1 Italian Language course

UnimeStone

Scholarships, Awards, Financial Support and
Tuition Fees

Enpam

Other UniME Services & Facilities

For non-native Italian speakers,
achieving a B1 Italian language
level is mandatory!

In order to achieve an optimal
learning during training activities
at the patient's bed, Italian
language courses are available and
have to be attended in the first
two years.

<https://medicine-and-surgery.cdl.unime.it/en/student-services-facilities/b1-italian-language-course>

Browse the section

Housing

E-learning

Canteens

Transport

Wi-Fi

Student Ambassador Program

Libraries

Sport

Disabled Students

Psychological support

Telegram

Tutor program

B1 Italian Language course

UnimeStone

Scholarships, Awards, Financial Support and Tuition Fees

Enpam

Other UniME Services & Facilities

ROSETTA STONE CAMPUS LICENSE

UniMeStone

Piattaforma di supporto per Rosetta Stone 

Rosetta Stone 

OBJECTIVES

- Foundations: 75 hours (3 ECTS)
- Fluency Builders: 75 hours (3 ECTS)

<https://medicine-and-surgery.cdl.unime.it/en/student-services-facilities/unimestone>



Training activities
are aimed at the
maturation of specific
professional skills



Single-Cycle Degree

**MEDICINE
AND SURGERY**

BIOMORF

Unime.it



Login

[The course](#)

[Enrolling](#)

[Studying](#)

[Graduating](#)

[Contacts](#)

[Services](#)



[Home](#) / [Studying](#) / [Practical Evaluation Traineeship](#)

Practical Evaluation Traineeship



Listen

**TIROCINIO PRATICO VALUTATIVO REGOLAMENTO DI
FUNZIONAMENTO**



PRACTICAL EVALUATION TRAINEESHIP OPERATING REGULATION



Browse the section

[Courses](#)

[Professors](#)

[Courses Timetable](#)

[Exam sessions](#)

[Graduation sessions](#)

[International Network](#)

[Classrooms and laboratories](#)

[Internships](#)

[Degree Teaching Regulations and Catalogue](#)

[Practical Evaluation Traineeship](#)

[Degree Course Council Meetings](#)

[Previous teaching activity](#)


Practical-evaluation traineeship (LA F): 15 ECTS

AREA	ECTS	Training Activity	SDS	LA	ECTS
Medicine (5th and 6th Year)	5	- Internal Medicine	MED/09	F	3
		- Emergency Medicine	MED/09	F	1
		- Pediatrics	MED/38	F	1
Surgery (5th and 6th Year)	5	- General Surgery	MED/18	F	3
		- Emergency Surgery	MED/18	F	1
		- Pediatric Surgery	MED/20	F	1
General Medicine (6th Year)	5	- Studios of the General Practitioners		F	5

The training activities are carried out

- in the wards of the Polyclinic University Hospital "G. Martino" in Messina, where patient care and assistance are combined with teaching and scientific research
- in external wards of either Polyclinic University Hospitals or Hospitals or Health Centers having an agreement with UniME
- in the studios of General Practitioners in Messina or abroad (if authorized by the local Order of Physicians, Surgeons & Dentists)

Order of Physicians, Surgeons & Dentists of Messina
Conférence des Ordres des Médecins Euro Méditerranée

A person in a white lab coat is holding a small globe of the Earth. A stethoscope is draped around the globe. The globe is marked with several red location pins. The background is a soft, out-of-focus blue.

Training activities can be carried out abroad at
partner Universities both in Europe and
outside the EU

[https://medicine-and-
surgery.cdl.unime.it/en/international-
network](https://medicine-and-surgery.cdl.unime.it/en/international-network)

FINAL EXAM 14 ECTS

FOUR GRADUATION
SESSIONS PER
ACADEMIC YEAR

July
October
December
March

The students have to apply for obtaining the degree by filling the specific form at least 6 months before the graduation exam date.

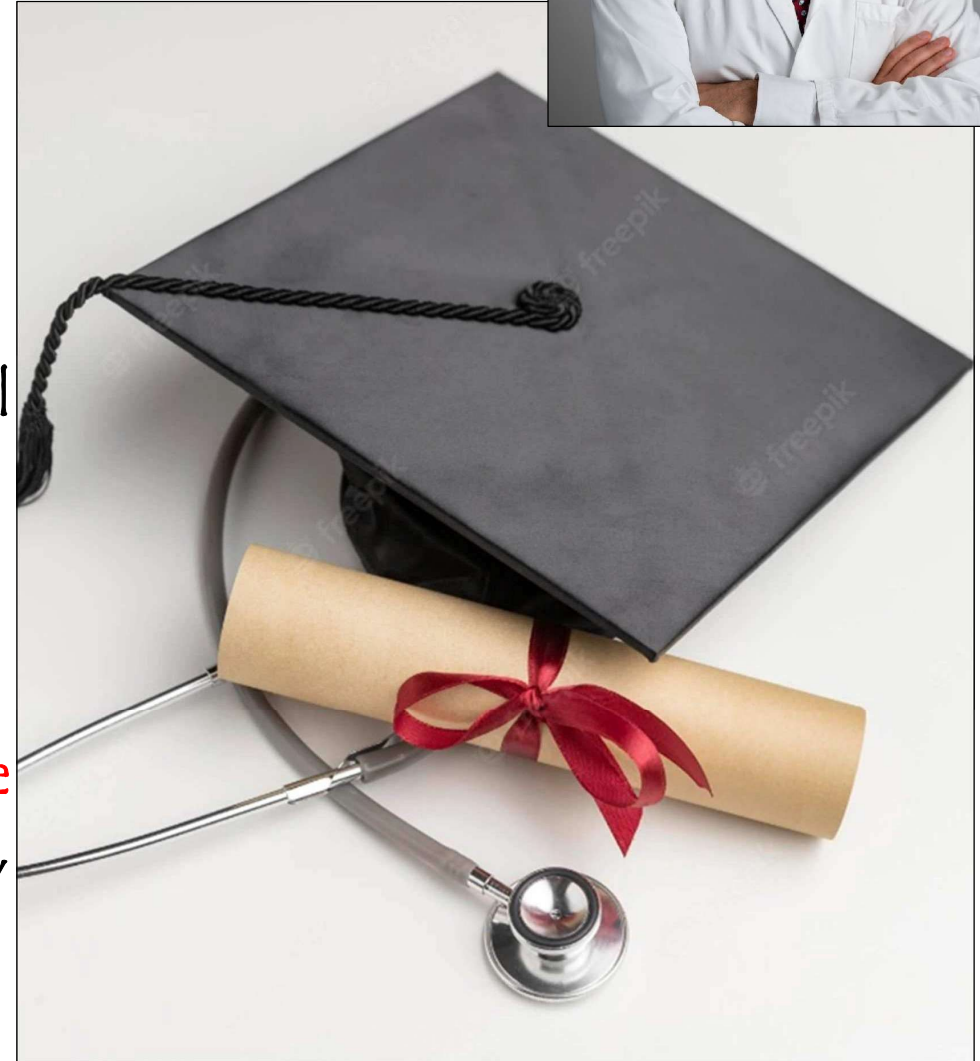
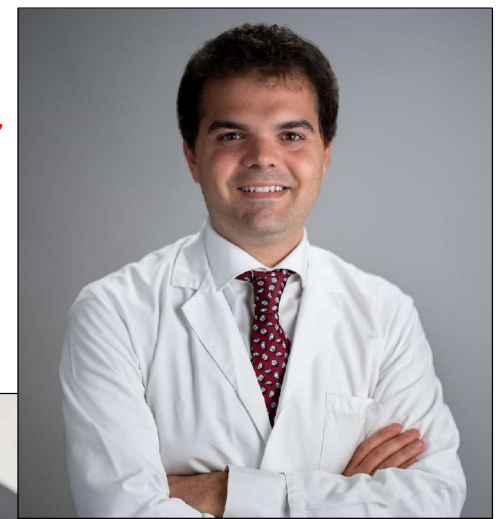
IMS Degree Teaching Regulations Art. 13 – Final exam

Pursuant to Art. 102 par. 1 of Law Decree 18/2020, the final exam of the Single Cycle Degree in Medicine and Surgery (class LM-41) is valid as state exam qualifying for the profession of Medical Doctor.

For this reason, the Commission always includes also 1 representative of the local Order of Physicians, Surgeons and Dentists.

Students are admitted to the final exam only after having passed the exam of the practical evaluation traineeship, ruled by the Decree n. 58 (May 9, 2018) of the Minister of Education, University and Research.

Dr Antonio D'Angelo,
OMCEO



INFORMATION REQUIRED IN THE FORM FOR THESIS ASSIGNMENT

<https://medicine-and-surgery.cdl.unime.it/en/studying/graduation-sessions>

- Supervisor (has to be one of the UniME or UniME partner Universities Professors)
- Thesis subject (preferably original, involving experimental approaches)
- Scheduled Graduation date

AND SURGERY
BIOMORF

[The course](#) [Enrolling](#) [Studying](#) [Graduating](#) [Contacts](#) [Services](#)

Home / Studying / Graduation sessions

GRADUATION SESSIONS

[Listen](#)

Online procedure for the obtainment of the
Degree: <https://www.unime.it/it/studenti/evidenza/al-la-procedura-line-il-conseguimento-titolo-di-laurea-lauree-marzo-2020>

- [Domanda assegnazione tesi](#)
- [Domanda cambio relatore tesi](#)
- [Domanda modifica titolo tesi](#)
- [Graduation sessions a.y. 2023.24](#)
- [Graduation sessions a.y. 2024.25](#)
- [APPLICATION FOR THESIS ASSIGNMENT](#)
- [REQUEST FOR REPLACEMENT OF THESIS SUPERVISOR](#)
- [REQUEST FOR CHANGING TITLE OF THE THESIS](#)
- [Thesis Title Page Template](#)
- [Abstract Template](#)

Browse the section

- [Courses](#)
- [Professors](#)
- [Courses Timetable](#)
- [Exam sessions](#)
- [Graduation sessions](#)**
- [International Network](#)
- [Classrooms and laboratories](#)
- [Internships](#)
- [Degree Teaching Regulations and Catalogue](#)
- [Practical Evaluation Traineeship](#)

- Deadline for thesis submission in Esse3: at least 7 days before graduation date
- Deadline for thesis abstract submission to the Secretary: 7 days before graduation date

HOW THE DEGREE GRADE IS CALCULATED?

Maximum grade is 110/110 with honors; **maximum 11 points** can be added to the admission grade (out of 110) calculated on the basis of the weighted average

Max 4 Points dependent on **Student's Career:**

- ❖ International mobility with ECTS acquisition (2 points)
- ❖ Conclusion of studies within the 6th year (2 points) or within 1 year after the 6th year (1 point)
- ❖ At least two grades with honors in basic and distinctive learning activities

7 Points dependent on **Quality of Dissertation:**

- quality of the thesis work
- level of commitment in thesis preparation
- student's knowledge of thesis subject and bibliography
- ability to discuss the thesis subject in a fluid manner
- ability to draw conclusions consistent with the results obtained
- ability to summarize, in a timely and exhaustive manner, the work performed
- ability to appropriately answer the Commission questions



Enpam



Students enrolled in the CdS in Medicine and Surgery who are attending the 5th year (in good standing or repeating) as well as the 6th year (in good standing or out of course) can enroll in the National Insurance and Assistance Body for Doctors and Dentists (Ente Nazionale di Previdenza e Assistenza dei Medici e degli Odontoiatri - ENPAM). By this way, they are immediately guaranteed by a social security and welfare coverage as if they had already been qualified, also obtaining an advantage on the contribution seniority. Registration is optional and can be done at any time of the academic year. You can decide to pay the contributions immediately or at the time of qualification. For more information, please visit the official webpage:

<https://www.enpam.it/comefareper/iscrizione-studenti/>

Telegram



Telegram

The Master's Degree in Medicine & Surgery is on Telegram!

Follow the Master degree in Medicine & Surgery on Telegram!

The Master's Degree in Medicine & Surgery is on Telegram!



The unidirectional channel is called **UNIME International Medical School**. To access it:

- Download the Telegram app available for Android and Apple platforms from your mobile device.

For Android devices (after downloading the Telegram app and opening it): click on the magnifying glass symbol from the main page, type in the "search" UNIMEIMS field. At that point, UNIME International Medical School will be selected and then click on "Join".

For Apple devices (after downloading the Telegram app and opening it): search for the channel from the browser, by writing UNIMEIMS in the "Search for messages or users" area of the Chat area. At that point, select UNIME International Medical School and then click on "+ Join".

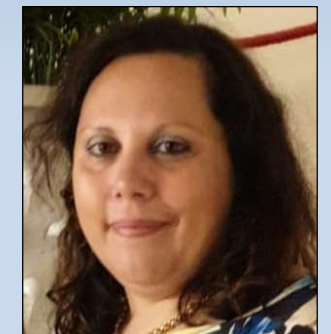
No information concerning channel users will be made public.

<https://medicine-and-surgery.cdl.unime.it/en>



UNIME-IMS MANAGEMENT STAFF

- ❑ Coordinator: Prof. Daniela Caccamo
e-mail: master.medicinesurgery@unime.it
(for any request of either exam or ECTS recognition or certificate validation);
daniela.caccamo@unime.it (for any request of appointment for personal issues)
- ❑ Vice-Coordinator: Prof Alessio Facciola
e-mail: master.medicinesurgery@unime.it
(for any request of either exam or ECTS recognition or certificate validation)
alessio.facciola@unime.it (for request of appointment for personal issues)
- ❑ Persons in charge of the Didactic Secretary:
Dr Massimo Brigandì, Dr Vincenza Santoro
e-mail: master.medicinesurgery@unime.it;
massimo.brigandi@unime.it; vincenza.santoro@unime.it
- ❑ Head of the Medical Secretary Unit: Dr Alfonso De Salvo
e-mail: alfonso.desalvo@unime.it; uop1medsanvet@unime.it
(for any administrative issue)



- ❑ Welcome Office (Head: Dr Giuseppe Lucchese)
e-mail: foreignstudents@unime.it; uopwelcomeoffice@unime.it
For information regarding IMAT, pre-enrolment and enrolment procedures and other administrative issues



- ❑ WELCOME POINT NETWORK
Welcome Point + Ambassador Student Program

Coordinator of Ambassador Students: Raouf Mastan
e-mail: abdulraouf.mastansheikabdullah@unime.it



Welcome Point Ambassador Student:
Suresh Yaddla
e-mail: sureshkumar.yaddla@unime.it



Medical Campus Ambassador Student:
Akbar Tehrani
E-mail: akbar.azaditehrani@studenti.unime.it



Contact person for Guidance and Tutoring

Prof. Tommaso D'Angelo
e-mail: tommaso.dangelo@unime.it



Contact person for International Mobility

Prof. M'Hammed Aguenouz
e-mail: aguenoz.mhommed@unime.it



All Professors:
<https://medicine-and-surgery.cdl.unime.it/en/studying/professors>

Use your institutional e-mail
address to contact them!



COMMISSION FOR TECHNICAL-PEDAGOGICAL PROGRAMMING

- Coordinator
- Vice-Coordinator
- 9 Teachers
- 2 students representatives
- 1 administrative technician

TASKS

- ✓ Setting of learning goals and contents of teaching activities
- ✓ Yearly and cyclic evaluation of Course performance (quality of teaching activities, n° of newly enrolled students/year, ECTS achieved/year, rate of international mobility etc)
- ✓ Recognition of exams, credits and certificates

THE TEACHERS OF THE COMMISSION FOR TECHNICAL-PEDAGOGICAL PROGRAMMING



Giacomo Fiumara
1° year



Angela D'Ascola
1° year



Giuseppe V. De Gaetano
2° year



Irene Bonaccorsi
2° year



Roberta Giuffrida,
3° year



Maurizio Martini,
4° year



Gabriella Di Rosa,
5° year



Biagio Zampogna,
5° year



Giusi Melita,
6° year

ADVISORY BOARD



- Dr Giacomo Caudo, President of Order of Physicians, Surgeons, Dentists of Messina (OMCEO-ME); President of Federation of Italian General Practitioners
- Dr Salvatore Amato, President of Order of Physicians, Surgeons, Dentists of Palermo (OMCEO-PA); Vice-President of Conférence des Ordres des Médecins Euro Méditerranées
- Dr Giuseppe Murolo, Health Director of Polyclinic University Hospital, ME
- Dr Marcello Nucifora, Health Director of IRCCS Neurolesi, ME
- Dr Giuseppe Ranieri Trimarchi, Health Director of ASP, ME
- Dr Basilia Zingarelli, Pediatrician, Director of Critical Care Basic Science Research, Cincinnati Children's Hospital Medical Center, Cincinnati, Ohio (US)
- Prof Rodolfo Savica, Neurologist, Mayo Foundation for Medical Education and Research, Rochester, Minnesota (US)
- Dr Simona Calabrese, Resident in Legal Medicine, University of Messina



WELCOME AT UNIME-IMS!